

Sanlixin Solenoid Valve

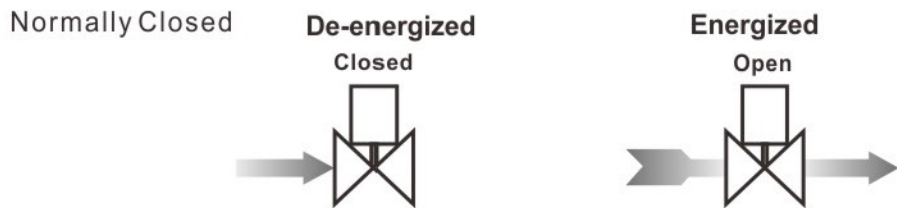
SLA 2/2-way pilot operated piston solenoid valve · normally closed

Solenoid Valves Numbering System for Order

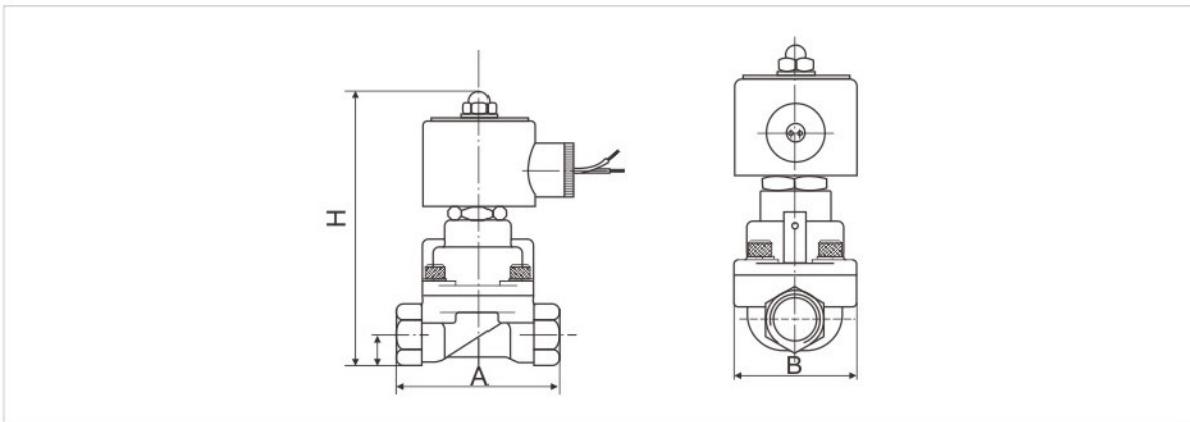
Position description	1	2	3	4	5	6	7	8	9	10
	Valve Series	Mode of Operation	Coil Type	Coil Class	Voltage	Seal Material	Body Material	Pipe Size	Orifice (φ mm)	Options
E.G.	SLA	1	W	H	01	T	1	D	15	<input type="checkbox"/>
	SLA Series	1: Normally Closed 2: Normally Open	W: Metallic Housing, Lead wires A: Metallic Housing, DIN Standard D: DIN Standard Connections, Fully Encapsulated N: Lead Wires, Water-tight, Fully Encapsulated U= Under water S: NASS Coil X: Explosion-proof M: SM Coil	H: H Class F: F Class H: H Class F: F Class	02=220VAC 230VAC 50/60HZ 01=110VAC 120VAC 50/60HZ 05=24VAC 13=DC24V 12=DC12V Contact the company for other voltage	T: Teflon +Fiberglass (for orifice under φ 5.5mm only) V: VITON E: EPDM N: NBR	Forged Brass 4= SS304 (Normal regualtions) 3= SS316 4= SS304	A: 1/8" B: 1/4" C: 3/8" D: 1/2" E: 3/4" G: 1" H: 1 1/4" J: 1 1/2" K: 2" F: Flange Connection	C3=2.5 C6=4.5 C6=4.5 15=15.0 C6=4.5 15=15.0 20=20.0 25=25.0 35=35. 50=50. 25=25.0 35=35.0 40=35.0 50=50.0 65=65.0 80=80.0 100=100.0	L: Neon Lamp N: NPT Connection T: Timers M: Manual Override

SLA 2/2-way pilot operated piston solenoid valve · normally closed

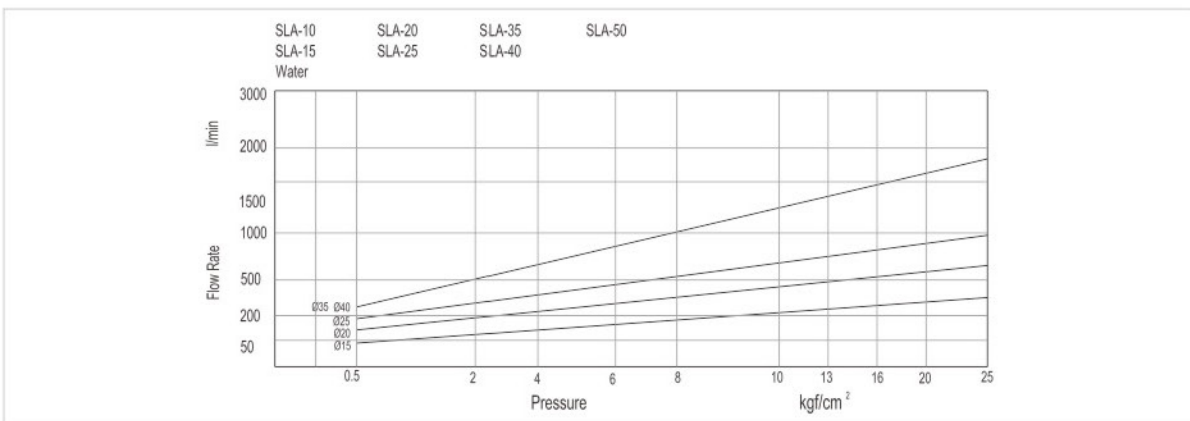
- 1:** 2-Way normally closed solenoid valve; Closed when de-energized, open when energized.
- 2:** Body material: brass
- 3:** Max. Allowable pressure 40kgf/cm²; Ambient Temp. 0°C~65°C (F CLASS) , 0°C~80°C (H CLASS)
- 4:** Serialized products, small in size, large flow rate, widely use.
- 5:** Flow as the arrow, mounts in any position; Best position is Solenoid vertical and upright direction.
- 6:** Voltage: 220VAC/230VAC/240VAC/110VAC/24VAC 50/60HZ 24VDC/12VDC; Voltage Tolerance: + 10% to -10%applicable voltage.
- 7:** Coil can fix Germany NASS Coil,Standard storage: 220VAC/230VAC/240VAC 50/60HZ 24V
- 8:** This series valves are offered Teflon for Seals to provide on-off control of various fluids.



Construction, External Dimensions Chart



Flow Chart



Sanlixin Solenoid Valve

SLA 2/2-way pilot operated piston solenoid valve • normally closed

Valve Selection List

Pipe Conn- ection	Orifice mm	CV Factor	Operating pressure differential (kgf/cm ²)								Max. Fluids Temp.	Coil Type	Power consumption		Coil Class	External Dimensions Length xWidth x Height A x B x H	Model Code Follows Voltage are 220VAC 50/60HZ	Weight (KG)	
			Min.		Air Gas		Max. Water Hot water Liquids		Light oil				AC/ DC	VA					W
			AC	DC	AC	DC	AC	DC	AC	DC				AC 220 V					DC 24 V
1/8"	2.5	0.23	0	13	13	13	13	7	7	10	180	D	22	13	H	48×25×85.5	SLA1SH02T1AC3	0.45	
	2.5	0.23	0	13	13	13	13	7	7		110	D	22	13	F	48×25×85.5	SLA1DF02V1AC3	0.45	
	2.5	0.23	0	13	13	13	13	7	7		135	D	22	13	H	48×25×85.5	SLA1DF02E1AC3	0.45	
	2.5	0.23	0	13	13	13	13	7	7		80	D	22	13	F	48×25×85.5	SLA1DF02N1AC3	0.45	
	4.5	0.6	0	7	4	7	4	4	4	7	165	D	22	13	H	58×25×85.5	SLA1SH02T1AC6	0.55	
	4.5	0.6	0	7	4	7	4	4	4		110	D	22	13	F	58×25×85.5	SLA1DF02V1AC6	0.55	
	4.5	0.6	0	7	4	7	4	4	4		135	D	22	13	H	58×25×85.5	SLA1DF02E1AC6	0.55	
1/4"	2.5	0.23	0	13	13	13	13	7	7	10	180	D	22	13	H	48×25×85.5	SLA1SH02T1BC3	0.4	
	2.5	0.23	0	13	13	13	13	7	7		110	D	22	13	F	48×25×85.5	SLA1DF02V1BC3	0.4	
	2.5	0.23	0	13	13	13	13	7	7		135	D	22	13	H	48×25×85.5	SLA1DF02E1BC3	0.4	
	2.5	0.23	0	13	13	13	13	7	7		80	D	22	13	F	48×25×85.5	SLA1DF02N1BC3	0.4	
	4.5	0.6	0	7	4	7	4	4	4	7	165	D	22	13	H	58×25×85.5	SLA1SH02T1BC6	0.5	
	4.5	0.6	0	7	4	7	4	4	4		110	D	22	13	F	58×25×85.5	SLA1DF02V1BC6	0.5	
	4.5	0.6	0	7	4	7	4	4	4		135	D	22	13	H	58×25×85.5	SLA1DF02E1BC6	0.5	
3/8"	15	4.5	0.5	25	20	25	20	20	20		110	D	20	20	F	75×52×129	SLA1DF02V1C15	1.25	
	15	4.5	0.5	10	10	10	10	10	10	10	185	W	30	25	H	75×52×129	SLA1WH02T1C15	1.25	
1/2"	15	4.5	0.5	25	20	25	20	20	20		110	D	20	20	F	75×52×129	SLA1DF02V1D15	1.2	
	15	4.5	0.5	10	10	10	10	10	10	10	185	W	30	25	H	75×52×129	SLA1WH02T1D15	1.2	
3/4"	20	9.0	0.5	25	20	25	20	20	20		110	D	20	20	F	85×60×141	SLA1DF02V1E20	1.5	
	20	9.0	0.5	10	10	10	10	10	10	10	185	W	30	25	H	85×60×141	SLA1WH02T1E20	1.5	
1"	25	13	0.5	25	20	25	20	20	20		110	D	20	20	F	100×70×148	SLA1DF02V1G25	1.9	
	25	13	0.5	10	10	10	10	10	10	10	185	W	30	25	H	100×70×148	SLA1WH02T1G25	1.9	
1 1/4"	35	26	0.5	25	20	25	20	20	20		110	D	20	20	F	120×90×168	SLA1DF02V1H35	3.6	
	35	26	0.5	10	10	10	10	10	10	10	185	W	30	25	H	120×90×168	SLA1WH02T1H35	3.6	
1 1/2"	35	26	0.5	25	20	25	20	20	20		110	D	20	20	F	120×90×168	SLA1DF02V1J35	3.5	
	35	26	0.5	10	10	10	10	10	10	10	185	W	30	25	H	120×90×168	SLA1WH02T1J35	3.5	
2"	45	45	0.5	25	20	25	20	20	20		110	D	20	20	F	150×110×190	SLA1DF02V1K50	4.5	
	45	45	0.5	10	10	10	10	10	10	10	185	W	30	25	H	150×110×190	SLA1WH02T1K50	4.5	

SLA 2/2-way pilot operated piston solenoid valve · normally closed

- 1:** 2-Way normally closed solenoid valve;
Closed when de-energized, open when energized.
- 2:** Body material: 304 stainless steel (standard) , 316 stainless steel (special made)
- 3:** Max. Allowable pressure 40kgf/cm²;
Ambient Temp. 0°C~65°C (F CLASS) , 0°C~80°C (H CLASS)
- 4:** Serialized products, small in size, large flow rate, widely use.
- 5:** Flow as the arrow, mounts in any position; Best position is Solenoid vertical and upright direction.
- 6:** Voltage: 220VAC/230VAC/240VAC/110VAC/24VAC 50/60HZ 24VDC/12VDC;
Voltage Tolerance: + 10% to -10% applicable voltage.
- 7:** Coil can fix Germany NASS Coil, Standard storage: 220VAC/230VAC/240VAC 50/60HZ 24VDC
- 8:** This series valves are offered Teflon for Seals to provide on-off control of various fluids.



Valve Selection List (Female Thread)

Pipe Conn-ection	Orifice mm	CV Factor	Operating pressure differential(kgf/cm ²)								Max. Fluids Temp.	Coil Type	Power consumption		Coil Class	External Dimensions Length x Width x Height A x B x H	Model Code Follows Voltage are 220VAC 50/60HZ	Weight KG	
			Min.	Max.									VA AC 220 V	W DC 24 V					
				Air Gas		Water Hot water Liquids		Light oil		Steam									
				AC	DC	AC	DC	AC	DC										AC/DC
3/8"	15	4.5	0.5	25	20	25	20	20	20	110	D	20	20	F	75×52×129	SLA1DF02V4C15	1.25		
	15	4.5	0.5	10	10	10	10	10	10	185	W	30	25	H	75×52×129	SLA1WH02T4C15	1.25		
1/2"	15	4.5	0.5	25	20	25	20	20	20	110	D	20	20	F	75×52×129	SLA1DF02V4D15	1.2		
	15	4.5	0.5	10	10	10	10	10	10	185	W	30	25	H	75×52×129	SLA1WH02T4D15	1.2		
3/4"	20	9.0	0.5	25	20	25	20	20	20	110	D	20	20	F	85×60×141	SLA1DF02V4E20	1.5		
	20	9.0	0.5	10	10	10	10	10	10	185	W	30	25	H	85×60×141	SLA1WH02T4E20	1.5		
1"	25	13	0.5	25	20	25	20	20	20	110	D	20	20	F	100×70×148	SLA1DF02V4G25	1.9		
	25	13	0.5	10	10	10	10	10	10	185	W	30	25	H	100×70×148	SLA1WH02T4G25	1.9		
1 1/4"	35	26	0.5	25	20	25	20	20	20	110	D	20	20	F	120×90×168	SLA1DF02V4H35	3.6		
	35	26	0.5	10	10	10	10	10	10	185	W	30	25	H	120×90×168	SLA1WH02T4H35	3.6		
1 1/2"	35	26	0.5	25	20	25	20	20	20	110	D	20	20	F	120×90×168	SLA1DF02V4J35	3.5		
	35	26	0.5	10	10	10	10	10	10	185	W	30	25	H	120×90×168	SLA1WH02T4J35	3.5		
2"	45	45	0.5	25	20	25	20	20	20	110	D	20	20	F	150×110×190	SLA1DF02V4K50	4.2		
	45	45	0.5	10	10	10	10	10	10	185	W	30	25	H	150×110×190	SLA1WH02T4K50	4.2		

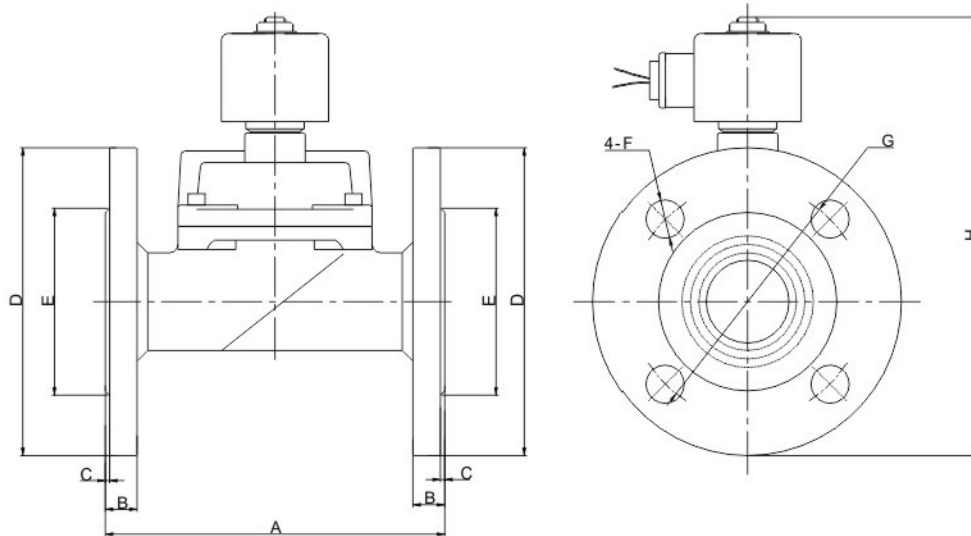
Sanlixin Solenoid Valve

SLA 2/2-way pilot operated piston solenoid valve • normally closed

Valve Selection List (Flange Connection)

Orifice mm	CV Factor	Operating pressure differential (kgf/cm ²)								Max. Fluids Temp.	Coil		Power consumption		Model Code Follows Voltage are 220VAC 50/60HZ	Weight (KG)	
		Min.	Max.								Type	Class	VA	W			
			Air Gas		Water Hot water Liquids		Light oil		Steam AC/ DC				AC 220 V	DC 24 V			
			AC	DC	AC	DC	AC	DC									
25	13	0.5	25	20	25	20	20	20		110	D	F	20	20	SLA1DF02T4F25	3.4	
25	13	0.5	25	20	25	20	20	20	10	185	W	H	30	25	SLA1WH02T4F25	3.4	
35	26	0.5	25	20	25	20	20	20		110	D	F	20	20	SLA1DF02T4F35	6	
35	26	0.5	25	20	25	20	20	20	10	185	W	H	30	25	SLA1WH02T4F35	6	
40	26	0.5	25	20	25	20	20	20		110	D	F	20	20	SLA1DF02T4F40	6.5	
40	26	0.5	25	20	25	20	20	20	10	185	W	H	30	25	SLA1WH02T4F40	6.5	
50	45	0.5	25	20	25	20	20	20		110	D	F	20	20	SLA1DF02T4F50	7.3	
50	45	0.5	25	20	25	20	20	20	10	185	W	H	30	25	SLA1WH02T4F50	7.3	

Construction, External Dimensions Chart



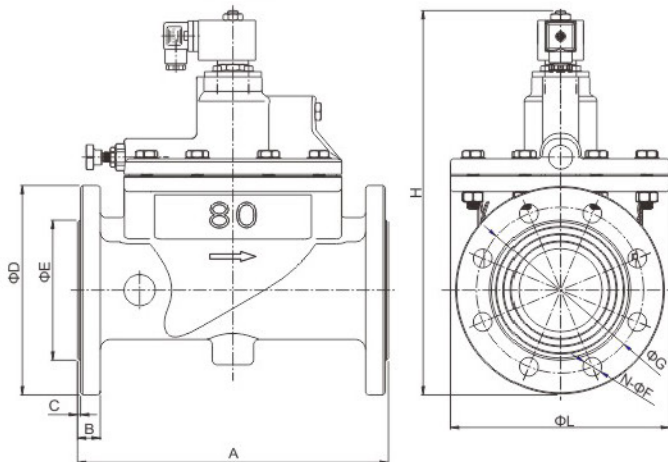
Model	A	B	C	φD	φE	φF	φG	H
DN25	134	13	2	110	58	4-14	85	185
DN32	160	15	2	135	76	4-18	100	200
DN40	160	15	2	145	84	4-18	110	205
DN50	200	16	2	155	88	4-18	125	250

SLA 2/2-way pilot operated piston solenoid valve · normally closed

Valve Selection List (Flange Connection)

Orifice mm	CV Factor	Operating pressure differential (kgf/cm ²)								Max. Fluids Temp.	Coil		Model Code Follows Voltage are 220VAC 50/60HZ	Weight (KG)	
		Min.	Max.								Type	Class			
			Air Gas		Water Hot water Liquids		Light oil		Steam						
AC	DC	AC	DC	AC	DC	AC	DC	AC/DC							
65	52	1	16	16	16	16	16	16	16	110	M	F	SLA1MF02T4F65	24	
65	52	1	16	16	16	16	16	16	10	200	A	H	SLA1AH02T4F65		
80	80	1	16	16	16	16	16	16	16	110	M	F	SLA1MF02T4F80	33	
80	80	1	16	16	16	16	16	16	10	200	A	H	SLA1AH02T4F80		
100	128	1	16	16	16	16	16	16	16	110	M	F	SLA1MF02T4F100	47	
100	128	1	16	16	16	16	16	16	10	200	A	H	SLA1AH02T4F100		
150	290	1	25	20	25	20	20	20	20	110	D	F	SLA1DF02T4F150W	76	
150	290	1	10	10	10	10	10	10	10	185	W	H	SLA1WH02T4F150W		

External Dimensions Chart



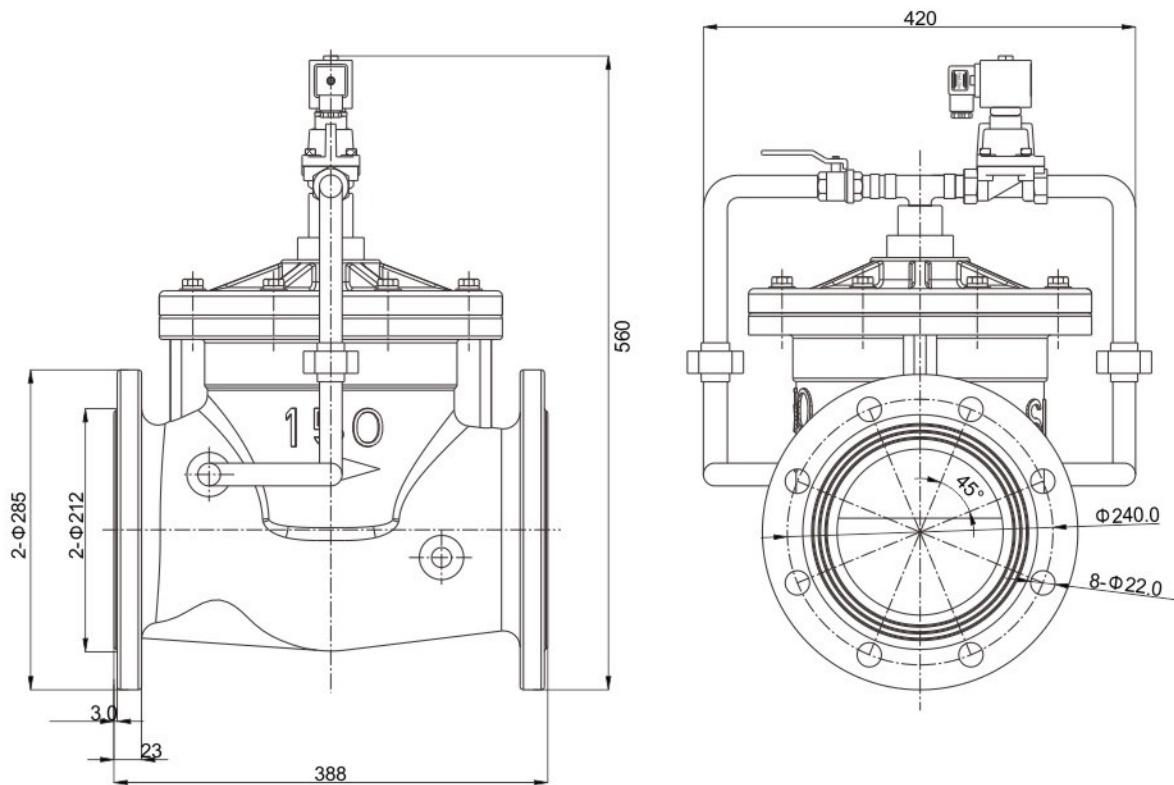
CODE	A	B	C	D	E	F	G	H	Material
SLA-65BF	270	22	3	185	125	18	145	335	SS304
SLA-80BF	300	22	3	200	135	18	165	370	SS304
SLA-100BF	350	24	3	235	165	18	190	410	SS304

Sanlixin Solenoid Valve

SLA 2/2-way pilot operated piston solenoid valve · normally closed



External Dimensions Chart (DN150)



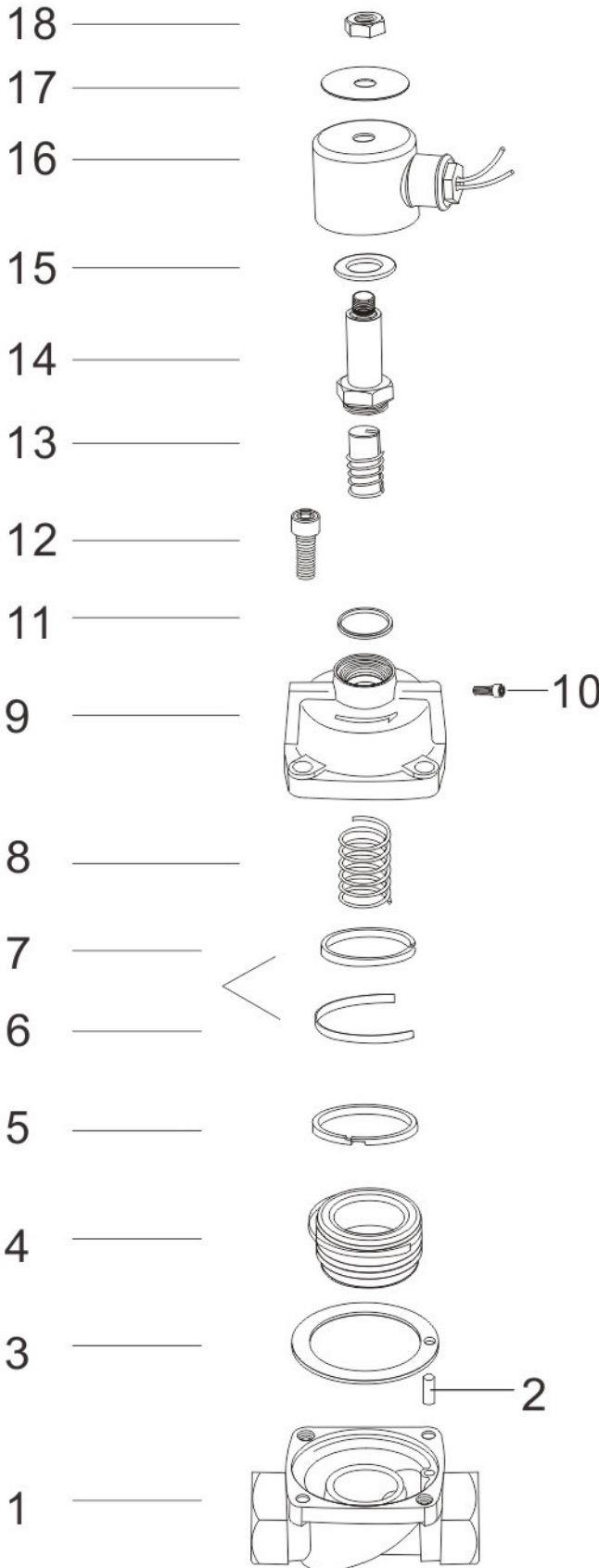


CE RoHS



SLA 2/2-way pilot operated piston solenoid valve · normally closed

Components Chart

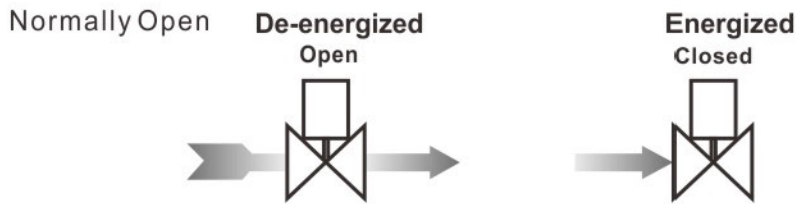


Code	Components
01	Valve Body
02	Fixed Bolt
03	Body Seals Ring
04	Piston Assembly
05	Piston Ring 1
06	Elastic Ring
07	Piston Ring 2
08	Piston Spring
09	Valve Cover
10	Steel Ball
11	Plunger Tube Seal Ring
12	Bolts
13	Plunger Assembly
14	Plunger Tube Assembly
15	Plate
16	Coil
17	Label
18	Lock nut

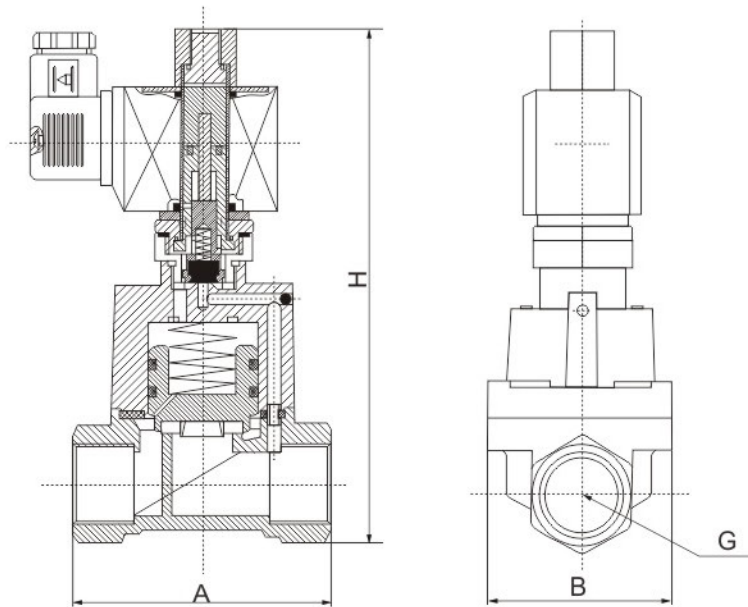
Sanlixin Solenoid Valve

SLA 2/2-way pilot operated piston solenoid valve · normally open

- 1:** 2-Way normally open solenoid valve;
Open when de-energized, closed when energized.
- 2:** Body material: forged brass
- 3:** Max. Allowable pressure 12kgf/cm²;
Ambient Temp. 0°C~65°C (F CLASS) , 0°C~80°C (H CLASS)
- 4:** Serialized products, small in size, large flow rate, widely use.
- 5:** Flow as the arrow, mounts in any position;
Best position is Solenoid vertical and upright direction.
- 6:** Voltage: 220VAC/230VAC/240VAC/110VAC/24VAC 50/60HZ 24VDC/12VDC;
Voltage Tolerance: +10% to -10% applicable voltage.
- 7:** This series valves are offered Teflon for Seals to provide on-off control of various fluids.



Construction, External Dimensions Chart





SLA 2/2-way pilot operated piston solenoid valve • normally open

Valve Selection List

Pipe Conn- -ection	Orifice mm	CV Factor	Operating pressure differential (kgf/cm ²)					Max. Fluids Temp.	Coil Type	Power consumption		Coil Class	External Dimensions Length x Width x Height A x B x H	Model Code Follows Voltage are 220VAC 50/60HZ	Weight KG
			Min.	Max.						VA AC 220 V	W DC 24 V				
				Air Gas	Water Hot water Liquids	Light oil	Steam								
3/8"	15	4.5	0.5	10	10	10	10	110	D	33	20	F	75×52×147	SLA2DF02V1C15	1.45
	15	4.5	0.5	10	10	10	10	130	W	33	32	H	75×52×147	SLA2WH02E1C15	1.45
1/2"	15	4.5	0.5	10	10	10	10	110	D	33	20	F	75×52×147	SLA2DF02V1D15	1.4
	15	4.5	0.5	10	10	10	10	130	W	33	32	H	75×52×147	SLA2WH02E1D15	1.4
3/4"	20	9.0	0.5	10	10	10	10	110	D	33	20	F	85×60×159	SLA2DF02V1E20	1.7
	20	9.0	0.5	10	10	10	10	130	W	33	32	H	85×60×159	SLA2WH02E1E20	1.7
1"	25	13	0.5	10	10	10	10	110	D	33	20	F	100×70×166	SLA2DF02V1G25	2.1
	25	13	0.5	10	10	10	10	130	W	33	32	H	100×70×166	SLA2WH02E1G25	2.1
1 1/4"	35	26	0.5	6	6	6	6	110	D	33	20	F	120×90×186	SLA2DF02V1H35	3.8
	35	26	0.5	6	6	6	6	130	W	33	32	H	120×90×186	SLA2WH02E1H35	3.8
1 1/2"	35	26	0.5	6	6	6	6	110	D	33	20	F	120×90×186	SLA2DF02V1J35	3.7
	35	26	0.5	6	6	6	6	130	W	33	32	H	120×90×186	SLA2WH02E1J35	3.7
2"	50	48	0.5	6	6	6	6	110	D	33	20	F	150×110×205	SLA2DF02V1K50	4.7
	50	48	0.5	6	6	6	6	130	W	33	32	H	150×110×205	SLA2WH02E1K50	4.7

Sanlixin Solenoid Valve

SLA 2/2-way pilot operated piston solenoid valve · normally open

- 1:** 2-Way normally open solenoid valve; Open when de-energized, closed when energized.
- 2:** Body material forged 304 stainless steel (standard) , 316 stainless steel (special made)
- 3:** Max. Allowable pressure 12kgf/cm²; Ambient Temp. 0°C~65°C (F CLASS) , 0°C~80°C (H CLASS)
- 4:** Serialized products, small in size, large flow rate, widely use.
- 5:** Flow as the arrow, mounts in any position;
Best position is Solenoid vertical and upright direction.
- 6:** Voltage: 220VAC/230VAC/240VAC/110VAC/24VAC 50/60HZ 24VDC/12VDC;
Voltage Tolerance: +10% to -10% applicable voltage.
- 7:** This series valves are offered Teflon for Seals to provide on-off control of various fluids.



Valve Selection List (Female Thread)

Pipe Conn- ection	Orifice mm	CV Factor	Operating pressure differential (kgf/cm ²)					Max. Fluids Temp.	Coil Type	Power consumption		Coil Class	External Dimensions Length x Width x Height A x B x H	Model Code Follows Voltage are 220VAC 50/60HZ	Weight (KG)
			Min.	Max.						VA	W				
				Air Gas	Water Hot water Liquids	Light oil	Steam								
3/8"	15	4.5	0.5	10	10	10	10	110	D	33	20	F	75×52×147	SLA2DF02V4C15	1.45
	15	4.5	0.5	10	10	10	10	130	W	33	32	H	75×52×147	SLA2WH02E4C15	1.45
1/2"	15	4.5	0.5	10	10	10	10	110	D	33	20	F	75×52×147	SLA2DF02V4D15	1.4
	15	4.5	0.5	10	10	10	10	130	W	33	32	H	75×52×147	SLA2WH02E4D15	1.4
3/4"	20	9.0	0.5	10	10	10	10	110	D	33	20	F	85×60×159	SLA2DF02V4E20	1.7
	20	9.0	0.5	10	10	10	10	130	W	33	32	H	85×60×159	SLA2WH02E4E20	1.7
1"	25	13	0.5	10	10	10	10	110	D	33	20	F	100×70×166	SLA2DF02V4G25	2.1
	25	13	0.5	10	10	10	10	130	W	33	32	H	100×70×166	SLA2WH02E4G25	2.1
1 1/4"	35	26	0.5	6	6	6	6	110	D	33	20	F	120×90×186	SLA2DF02V4H35	3.8
	35	26	0.5	6	6	6	6	130	W	33	32	H	120×90×186	SLA2WH02E4H35	3.8
1 1/2"	35	26	0.5	6	6	6	6	110	D	33	20	F	120×90×186	SLA2DF02V4J35	3.7
	35	26	0.5	6	6	6	6	130	W	33	32	H	120×90×186	SLA2WH02E4J35	3.7
2"	50	48	0.5	6	6	6	6	110	D	33	20	F	150×110×205	SLA2DF02V4K50	4.7
	50	48	0.5	6	6	6	6	130	W	33	32	H	150×110×205	SLA2WH02E4K50	4.7

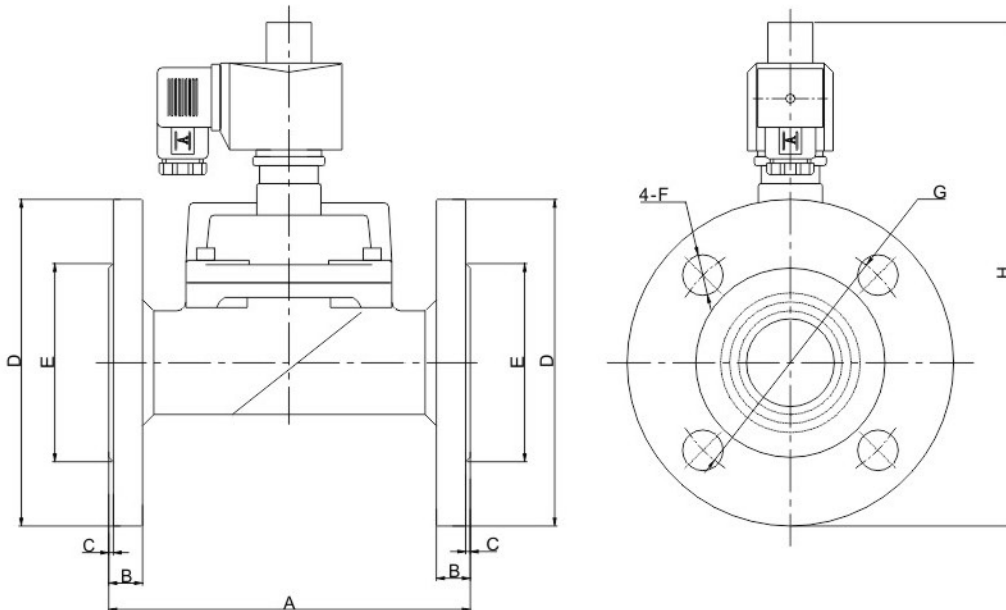


SLA 2/2-way pilot operated piston solenoid valve • normally open

Valve Selection List (Flange Connection)

Orifice mm	CV Factor	Operating pressure differential (kgf/cm ²)								Max. Fluids Temp.	Coil		Power consumption		Model Code Follows Voltage are 220VAC 50/60HZ	Weight (KG)	
		Min.	Max.								Type	Class	VA	W			
			Air Gas		Water Hot water Liquids		Light oil		Steam AC/ DC				AC 220 V	DC 24 V			
			AC	DC	AC	DC	AC	DC									
25	13	0.5	10	10	10	10	10	10	10	0	110	D	F	33	20	SLA2DF02V4F25	3.6
25	13	0.5	10	10	10	10	10	10	10	10	130	W	H	33	32	SLA2WH02E4F25	3.6
35	26	0.5	6	6	6	6	6	6	6	6	110	D	F	33	20	SLA2DF02V4F35	6.2
35	26	0.5	6	6	6	6	6	6	6	6	130	W	H	33	32	SLA2WH02E4F35	6.2
40	26	0.5	6	6	6	6	6	6	6	6	110	D	F	33	20	SLA2DF02V4F40	6.7
40	26	0.5	6	6	6	6	6	6	6	6	130	W	H	33	32	SLA2WH02E4F40	6.7
45	45	0.5	6	6	6	6	6	6	6	6	110	D	F	33	20	SLA2DF02V4F50	7.5
45	45	0.5	6	6	6	6	6	6	6	6	130	W	H	33	32	SLA2WH02E4F50	7.5

External Dimensions Chart



Model	A	B	C	φD	φE	φF	φG	H
DN25	134	13	2	110	58	4-14	85	201
DN32	160	15	2	135	76	4-18	100	216
DN40	160	15	2	145	84	4-18	110	221
DN50	200	16	2	155	88	4-18	125	266

Sanlixin Solenoid Valve

SLA series coil parameters tables

SLA Series Coils Characteristics List

Coils Model Code	Voltage	Power consumption					Suitable Valve Model
		50HZ VA		60HZ VA		DC	
		Inrush	Holding	Inrush	Holding	W	
D04-3101	AC220V	55	22	55	18	SLA Normally Closed Series φ 2.5~4.5mm	
D04-3102	AC110V	55	22	55	18		
D04-3106	DC24V						13
D04-3107	DC12V						13
D01-4101	AC220V	82	20	82	20	SLA Normally Closed Series	
W09-81101	AC220V	67	33	67	33		
D01-4102	AC110V	82	28	82	28		
W09-81102	AC110V	67	33	67	33		
D01-4106	DC24V						20
W09-81106	DC24V						24
D01-4101	AC220V	82	20	82	20	SLA Normally Open Series	
D01-4102	AC110V	82	28	82	28		
D01-4106	DC24V						20
D01-4107	DC12V						20